

Cubu flex life

notching of dull angles (e.g. 135° corners)



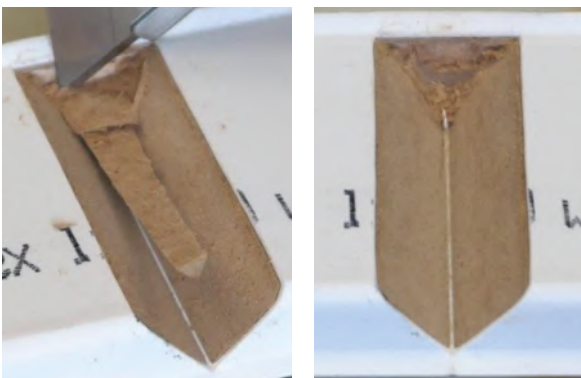
1 turn over the profile on the head - put it straight on the trestle - lock the clamping device - cut very carefully



2 only cut the wooden core - only to the soft lip



3 cut in line under the soft lip



4 remove the wooden core careful



5 install the Cubu flex life around the corner

6 in the last step cut through the plastic coating on the top