

Material Properties

Life Version

- The material is made from a polyolefin based polymer and is free from toxic substances.
- It does not contain any solvents, softeners or other halogens and heavy metals such as lead, cadmium etc.
- The material is totally inert.
- The **self-adhesive variety („WLK“)** has a special solvent-free, factory made adhesive system “Pomur UZIN” on the back side to ensure the dimensionally stable adhesion of Life soft-coved skirting onto sufloors with a structure depth of 1mm.
- The Pomur allows for a solvent-free, quick and clean adhesion of the profile in interior areas.

PVC Version

- It is made from phthalate free soft PVC.
- **Self-adhesive variety („WLK“):** There is a special solvent-free, factory made metal reinforced adhesive system “Remur UZIN” applied to the back side to ensure the dimensionally stable adhesion of PVC soft-coved skirting onto smooth subfloors.
- The Remur allows for a solvent-free, quick and clean adhesion of the profile in interior areas

Storage and Transport

- The soft-coved skirting should lie rolled up in the packaging and a paper core should be used to stabilise the roll.
- The profile rolls are packed in paper, which helps to avoid the profile getting dirty when installing.
- Always take the profile rolls out of the packaging with this paper.
- The boxes must be laid flat. Do not store in an upright position.
- Please store and transport the boxes away from zones of uneven and high pressure.
- Max. stacking height 10 boxes.



Occupational safety and environmental protection




The product does not require any special occupational health measures to be put in place. Due to industrial hygiene regions we recommend that you avoid eating, drinking and smoking whilst working with the product. Keep out of the reach of children!

- **Tips by the professional:**
- More tips and tricks can be found in our new processing videos on YouTube, in the Doellken app or via:
- www.doellken-profiles.com.



Previous versions are no longer valid once this version is published.
Version: september 2017

Do you have any questions or problems? Feel free to contact us: Hotline: +49 3643/ 4170-222, via our app or via www.doellken-profiles.com

Döllken Profiles GmbH
Stangenallee 3
99428 Nohra
Follow us on   

T: +49 3643 4170 711
F: +49 3643 4170 330
info@doellken-profiles.com
www.doellken-profiles.com

Installation instructions



for PVC & chlorine-free (Life) soft-coved skirting

For the fitting you need:



Rubber-hammer



Döllken skirting scissor



UZIN Toptac (optional)



Easy-Scooter (optional)

Döllken Profiles

we create.
we innovate.

SURTECO GROUP

Please observe the general preparation and post-treatment instructions before starting to install the skirting boards. These can be found on our website www.doellken-profiles.com or via our app.



It is necessary that the flexible skirtings be checked immediately after delivery. After cutting / assembly complaints, which were clearly visible before cutting / assembly can not be accepted.

Did you know? The Easy-Scooter allows a quick and stress-free laying of the soft-coved skirtings.



Subfloor preparation

- The subfloor must be evenly dry, hard, stable and free of fat, dust and silicon.
- Wall coverings at the skirting level must be cut off/ removed.
- Remove the dust with a commercial, solvent free primer (e.g. UZIN PE 260)
- In accordance with the condition of the wall, any unevenness and structural depths of >1 mm should be smoothed over with an appropriate filler.
- The floor covering must be stuck down flat to the subfloor at the edges.

Assembly procedure

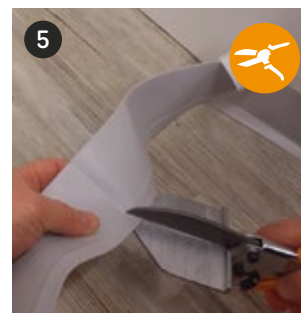
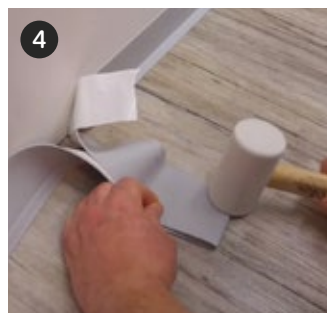
Cutting: Cut lengthways with the Döllken skirting scissors or a carpet knife. **Soft-coved skirting must always be laid in a draft and tension free way.**

Processing

- 1 The profile is placed on the floor with the help of the foldable foot and pressed against the wall. When doing this, care should be taken to ensure that the profile is pressed against the wall in a draft free and tension-free way.
- 2 In accordance with the type of mounting, the cover paper should be taken off the adhesive tape just before sticking it to the soft-coved skirting.

Composition

- Shift the joints to the inner corners where possible.
- If that is not possible, the joints can be welded with a welding tool or a cold weld.



We recommend prioritising the processing of the self-adhesive soft-coved skirting in order to save time.

- When processing profiles with a contact adhesive or tapes then the instructions issued by their respective manufacturers should be followed.
- Please only use adhesives that are suitable for the relevant type of material (PVC/LIFE). Please seek advice on the technical aspects of the application where necessary.*

Our recommendation:

- for PVC varieties: „UZIN Remur“
- for Life varieties: „UZIN Pomur“

- 3 The profile must be hit with a rubber hammer all over or rolled with a wallpaper roller when being fixed to the soft-coved skirting.

Corner constructions

- The soft-coved skirting must be pre-folded both on the inner and outer corners, in order to ensure there is no tension at the joins.
- 4 Additional hammering at the pre-folded site with a rubber hammer should help to avoid this.

outer corner

- **After the pre-folding: the profile is then to be laid in a draft and tension free way at the outer corners, without the need for cutting.**
- We recommend gently warming the pre-folded site on the outer corner with a hot air gun after fixing the profile to the skirting. **This can also help to avoid any tension and stress whitening that may arise.**
- We recommend securing the lip directly to the floor using a drop of secondary adhesive.

inner corner

- 5 It is necessary to cut the foot at the inner corner in order to avoid any tension. A cut is to be made from the foot to the fold site for this purpose.

It is also possible to cut the inner and outer corners when assembling. This can help to avoid unnecessary tensile forces on the adhesion. This cut can help to build exact bevels at the corners. Here we recommend welding the joints/bevels with a welding tool or a cold weld.

* only in the normal WL series. The WLK series is already equipped with an adhesive tape from UZIN.