

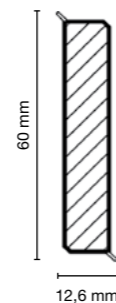
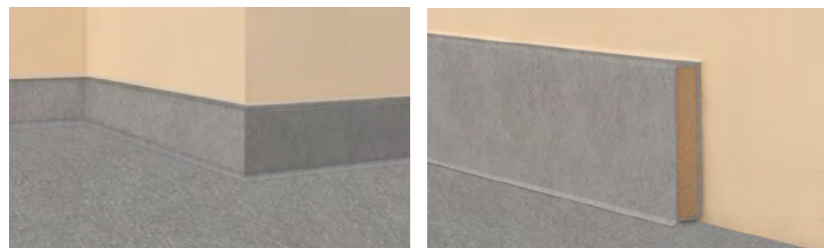
Product highlights 2017

Novelties in our range



Cubu Stone & Style

New trend range with stylish finishes



Packaging
1 packaging unit
= 10 x 2,5 m

Material

- HDF core wrapped in chlorine-free PP/TPE based Polyblend with flexible soft top and bottom lips
- robust and resistant against changing climate
- trendy stone and concrete look

Installation recommendations



Döllken
Mitre tool



Döllken
Hot-melt adhesive

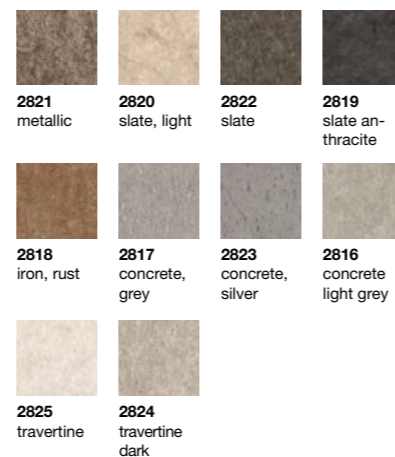


Cubu flex life is available immediately, also in anthracite colour.



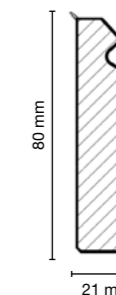
anthracite
1209

Colours



Hamburg Style 80

The universal cored skirting board – now also available in timeless, traditional design

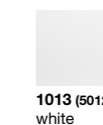


Packaging
1 packaging unit
= 6 x 2,5 m

Material

- HDF core wrapped in a chlorine-free PP/TPE based Polyblend, with flexible, soft top and bottom lip
- robust and resistant against changing climates
- traditional design for universal application

Colours



1013 (5012)
white

Installation recommendations



Döllken
Mitre tool*



Döllken
Hot-melt adhesive

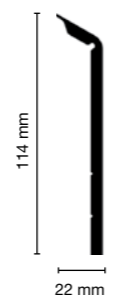
* for Hamburg Style 80 you need a
additional clamp for Mitre tool

Accessories

White corner blocks as inside and outside corners

Tile renovation profile

The profile for renovations using PVC, linoleum and LVT

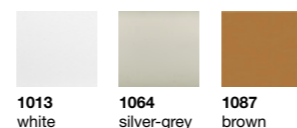


Packaging
1 packaging unit
= 20 x 2,5 m

Material

- foamed PVC based Polyblend
- to cover old tile skirtings
- height-reducible to suit
- flexible soft top lip for tight wall abutment

Colours



Easy-Scooter

Roll-off device for fast and accurate application of flexible skirting boards

Technical data

Dimension: 55 x 50 cm
Load carrying capacity: up to 100 kg
Weight: ca. 4 kg (excluding flexible skirting roll and tool)

Convincing advantages

- easy, fast and smooth dispensing of flexible skirting from the roll
- many applications and optimal flexibility
- attachment option for laying tools (rubber hammer/skirting board scissors)
- very sturdy construction
- other potential applications: dispensing of edge insulating strips, cable, wire etc.....

